

ART NOUVEAU AND ART DECO PEWTER

Liberty, London, was founded in 1875 by **Arthur Lasenby Liberty** (1843-1917). The firm imported Art Nouveau style pewter from several German firms until 1903 when the Birmingham firm **W.H. Haseler** were commissioned to cast Liberty's own designs under the name "Tudric". Designers: **Archibald Knox** from 1901 and later **Rex Silver, David Veasey** and **Jessie M. King**.

Footed bowl with two handles and sharply flared rim decorated with stylized trees and two horizontal bands. The lower band with quotes from Alfred Tennyson's 'Come into the garden, Maude' 'AND THE WOODBINE SPICES ARE WAFTED ABROAD AND THE MUSK OF THE ROSE IS BLOWN'. Designed for Liberty's Tudric range by **David Veasey** c. 1905 and marked indistinctly with the model number '011'.

Height 140 mm, rim diam. 235 mm, base diam 155 mm.



Vase with two handles and sharply flared rim decorated with stylized trees and two horizontal bands, the legend 'for old times sake' on a lower band. Designed for Liberty's Tudric range by **David Veasey** c. 1902 with mark and No. 010 struck underneath.

Height 201 mm, rim diam. 103 mm, base diam 118 mm.



Liberty & Co Tudric pewter porringer c. 1912 with well hammered finish to the outside of bowl. Probably designed by **Archibald Knox**. Marks and serial number struck underneath.

APS2 - lot 10, now at Shakespeare Birthplace Trust.

Length across ears 176 mm, diam 128 mm, height 43 mm.





Small footed vase with decoration of stylized leaves. Touch under base by **Hans Peter Hertz**, Copenhagen. He took over the business from the early designer Mogens Ballin and used the monogrammed mark HPh. Just Andersen designed jewellery for Hertz (and Michelsen) early in his career.



Small tumbler with turned decoration. Touch under base by **Hans Peter Hertz**, Copenhagen. (See comments above.) It would appear that '1619' is not a pattern number.

Height 70 mm, rim diam. 64 mm.



Georg Jensen, Copenhagen, (1866-1935). Mainly a designer in silver, he also employed top designers for both pewter and stainless steel ware such as **Just Andersen**, **Astrid Fog**, **Count Bernadotte of Sweden** and the now very fashionable **Henning Koppel**. Both George Jensen and Just Andersen/Michelson are now in the ownership of the Royal Danish Porcelain Factory ("Royal Copenhagen"), in turn owned by the Carlsberg Trust, the brewery group. (The Carlsberg Trust also owns the famous Swedish glass works of Orrefors and Kosta-Boda.)



Water jug with off-set handle. Made by **Georg Jensen**, Copenhagen and designed by **Henning Koppel** (HK).

Height to spout 123 mm.



Ib Just Andersen, Copenhagen, 1884-1943. This is probably the most under-rated of all the modern (Art Nouveau/Art Deco/neo-classical) designers both internationally and in Denmark. Early in his career he designed jewellery for Hertz and Michelsen and also later for his own firm. He also designed for Georg Jensen, who eventually took over his firm from Andersen's widow Alba, who continued the business for some time. His output consisted mainly of smaller decorative objects in pewter, brass, bronze and copper. He also developed his own lead/Antimony alloy which he named "Disko" after Disko Bay in Danish Greenland where he grew up. Casts in this alloy were patinated as bronze, copper or brass and were marketed as a "bronzes", presumably for people of more modest means. Andersen had showrooms in Berlin, London, New York and Los Angeles. His mark should be read "Just A". Andersen's more ambitious work are in 2006 still well under priced.

Heavily cast beaker with decoration of a mediaeval battle scene cast in relief in the Art Deco style. Marks underneath by Just Andersen, Copenhagen.

Height 133 mm, base diam. 88 mm, rim diam 102 mm.



Head of a young girl with wind-swept hair, cast in Just Andersen's 'Disko' alloy and patinated dark brown. Modelled and signed 'Just A' in the mould by Just Andersen, Copenhagen, also with model No. 1678.

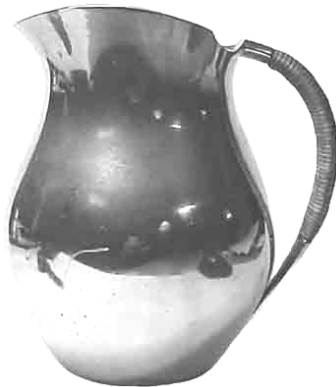
Height 133 mm.





Tea pot with spout incorporated in the design. Heart shaped lid and heart shaped finial with cast and rattan-bound, swept handle. Marks underneath by Just Andersen, Copenhagen.

Height o/a 164 mm, length of base 72 mm.



Water jug with cast and rattan-bound, swept handle. Marks underneath by Just Andersen, Copenhagen.

Height to spout 176 mm, base diameter 74 mm.



Small water jug with cast and rattan-bound handle. Marks underneath by Just Andersen, Copenhagen.

Height to spout 126 mm, base diameter 57 mm.



Small water jug with cast and rattan-bound swept handle. Marks underneath by Just Andersen, Copenhagen.

Height to rim 123 mm, base diameter 62 mm.



Decorative plate with matted finish and the cut-out central motif of a goldfish in stylised see-weed applied to a turned and blackened recess. Marks underneath by **Just Andersen**, Copenhagen.

Diameter 300 mm.



Small vase of rounded rectangular shape on four feet included in the mould. Marks underneath by **Just Andersen**, Copenhagen.

Height 68 mm, rim 62 x 55 mm.



J. P. Kayser & Sohn, ("Kayserzinn"), had a studio in Köln and the factory in Oppum near Krefeld west of Düsseldorf. Best known artists: **Hugo Leven**, **Karl Geyer**, **Hermann Pauser**, **Karl Berghoff** and **Johann Christian Kroner**. Exported to Liberty in 1899.

Cream jug with spout and insulated handle decorated in the neo-classical style. Kayserzinn touch underneath with model No. 4760 and a hand-struck probable batch number '23' by **J.P. Kayser & Sohn**, Krefeld.

Height to rim 104 mm, base diam. 57 mm.





Cream jug with spout and insulated handle decorated in the neo-classical style. Kayserzinn touch underneath with model No. 4760 and a hand struck probable batch number '23' by **J.P. Kayser & Sohn, Krefeld.**

Height to rim 104 mm, base diam. 58 mm.



Wine cooler with two substantial handles and the bottom lifted well off the table by a tall base. One side decorated with a stag and the other with a deer. Kayserzinn touch underneath with model No. 4625 and a hand struck probable batch number '23' by **J.P. Kayser & Sohn, Krefeld.**

Height 247 mm, rim diam. 230 mm.



Set of six Art Nouveau pewter liqueur tots with the stem/tree-trunk branching out into a stylized tree pattern on the outside of the bowls. Each marked underneath 'KAYSERZINN 4460' by **J.P. Kayser & Sohn, Oppum nr Krefeld, Germany, c. 1905-10.**

APS2 – lot 12, now at the Shakespeare Memorial Trust coll.

Height 98 mm, diam base 46 mm, diam rim 53 mm.



Pair of vases with flower decoration on front and back. Kayserzinn touch underneath with model No. 4091 and a hand struck probable batch number '41' by **J.P. Kayser & Sohn**, Krefeld.

Height 298 mm, base diam. 74 mm.



Württembergische Metallwarenfabrik (WMF), Geislingen. Founded in 1853 as Straub & Schweizer; Straub & Sohn from 1866. Joined with A. Ritter & Co. in 1880 to form "WMF". Employed 6000 people at its peak.

Designers: Mostly anonymous factory employees working in the "style-of-the-day". Head of studio was the sculptor **Albert Mayer**. **Hans Peter** designed for the firm as an independent.

Trade marks: Ostrich (from German "Strauss" and Greek[?] "Straub" - the originator's name.)

WMF bought in 1905 **Ferdinand Hubert Schmitz (Rheinischen Bronzegiesserei)**, founded 1901 in Ehrenfeld near Köln, with the brand "**Orivit**". W-over-MF-marks were used from 1907 although old Orivit marks still visible in the old moulds.

WMF bought in 1906 **Orion Kunstgewerbliche Metallwarenfabrik, G.F. Schmitt**, Nürnberg and so came into possession of the famous 3650 kp/sq.cm hydraulic Huber Press.

Small cream jug with decoration of stylized flowers. Marked underneath with 'Orivit' and a hand struck model No. by **Orion Kunstgewerbliche Metallwarenfabrik, G.F. Schmitt**, Nürnberg, probably before 1906.

Height to spout 78 mm, base diam. 50 mm.



Cake 'basket' with 'broken' decoration. Tocu with model No. 102 underneath by **Orion Kunstgewerbliche Metallwarenfabrik, G.F. Schmitt**, Nürnberg, before 1906.

Size 390 x 225 mm.





Bowl with floral decoration. Touch underneath of **Osiris** and a model number by **Walter Scherf & Co**, Nürnberg. The firm exported to Liberty in 1899.

Size 290 x 205 mm.



Svenskt Tenn, Stockholm. Founded in 1924 by the industrial designer **Estrid Erikson**, born 1894. She is mainly responsible for the enormous popularity in Sweden of pewter objects in the Art Deco-style from the early 1930s. The sculptor **Anna Petrus-Lyttkens** designed in 1929 a Picasso-esque vase and the famous "Lion-plastique", with the twisted and up-turned head, now in many museums of applied art and illustrated by Ludwig Mory and others. The architect **Josef Frank**, 1885-1967 from Vienna (also professor of architecture in New York) joined Svenskt Tenn in 1932 as a designer of furniture and pewter in the Art Deco style. Other 1930s designers were: **Torwald Arlef**, **Nils Fougstedt**, **Björn Trägårdh**, **Robert Hult**, **Ossian Elgström** and **Marie-Louise Blomberg**.

(The name "Svenskt Tenn" is unfortunate as it simply means "Swedish Pewter" and can therefore legitimately be put on pewter by any Swedish manufacturer. Svenskt Tenn probably had to make a trademark registration with the Swedish Patents Office of their "Svenskt Tenn" mark surrounded by three crowns and of an angel mark with 'ST' in Gothic writing.)



Large vase of beaker shape with five inlaid brass bands. Marks struck underneath with the date letter D8 for 1930 by **Svenskt Tenn**, Stockholm.

Height 214 mm, base diam. 104 mm, rim diam. 184 mm.



Cylindrical bon-bon server with a well cast Art Deco design of a violin playing and singing naked lady with wind blown hair. No marks, but Swedish, probably Svenskt Tenn, Stockholm or Ystads Tenn. The lid onto which the pewter figure was mounted and also the base are made of bakelite.

Height o/a 306 mm, base diam. 125 mm.



Schreuder & Olsson, Stockholm. This firm has cast designs by many leading Swedish artists and designers from the turn of the century such as the painter **Edwin Ollers**, (1888-1959), the sculptor **Aron Jerndahl**, (1853-1936), the sculptor **Olof Ahlberg** (1876-1956) and others. Schreuder & Olsson's mark in a shield of the "Queen of Lake Mälär" with S and O flanking the crowned head is invariably found in conjunction with the name of the designer and also a date-letter.

Swedish pewter was struck with a date letter from 1694, the letter-series modified to follow Swedish silver marks from 1759. A8 below is 1927.

Coffee pot with fluted and hinged lid with a fluted finial. Barrel also fluted with C-scroll, rattan-wound handle. Touches underneath by **Schreuder & Ohlsson**, Stockholm and date letter A8 for 1927. The designer's name, **Ollers**, (Edwin Ollers 1888-1959) is struck with a separate touch.

The mark in a horizontal oval below is an approval mark issued by the Swedish Hand Craft and Design Council for use by the pewterer on designs approved by them.

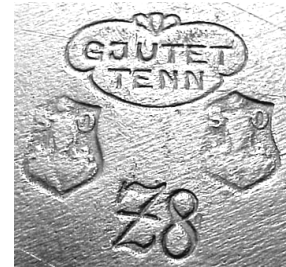
Height o/a 283 mm, height to rim 203 mm, base diam. 93 mm.





Dish with a pattern in the mould of fishes swimming in a current. Touches underneath by **Schreuder & Ohlsson**, Stockholm and date letter **Z8** for 1950. The designer's name, **Olof Ahlberg**, is scratch engraved in the mould.

Diameter 373 mm.



Vase in the shape of a beaker with a short but pronounced rim. Touches underneath by **Schreuder & Ohlsson**, Stockholm and date letter **Z8** for 1950. The designer's name, **Ollers**, (Edwin Ollers 1888-1959) is struck with a separate touch.



Ash tray in the Art Deco style with a boy with a fish tail holding a fish. Marks underneath by **Ystad Tenn**, Ystad, Sweden. This firm had a large production in the 1930s of mainly Art Deco pewter articles (some very good indeed) and later moved to the county of Blekinge at a date unknown to me. Date letter **L8** = 1937. The ash tray was a birthday present to my father in law in that year.

Diameter 130 mm.



Toilet mirror with handle decorated with a stylized deer. Marks on edge of mirror with date letter B8 for 1927 by **Ystad Tenn**, Ystad, Sweden.



Wine cooler designed for arrak punch with cylindrical bottle holder soldered inside the ice container and with compartments to hold and to cool eight punch cups. Marks underneath by **Ystad Tenn**, Ystad, Sweden. (It is not clear when the firm changed name to 'Ystad-Metall'.)

Height 243 mm, 181 mm, diameter internal bottle cylinder 182 mm.



Set of six cups for Arrak punch. Marks underneath by **Ystad Tenn**, Ystad, Sweden, with dateletter M8 for 1938.

Height 34 mm, rim diam. 64 mm.





Swedish box for collar studs with a well modelled and cast man on his knees peering through a whole for his little stud. The box is lined with green baize. Marks underneath by the unidentified maker 'W & D' and 'Sv. Tenn' with a legend stating that the pattern is 'protected in law'. This box belonged to my father.

Diameter 63 mm, height o/a 42 mm.

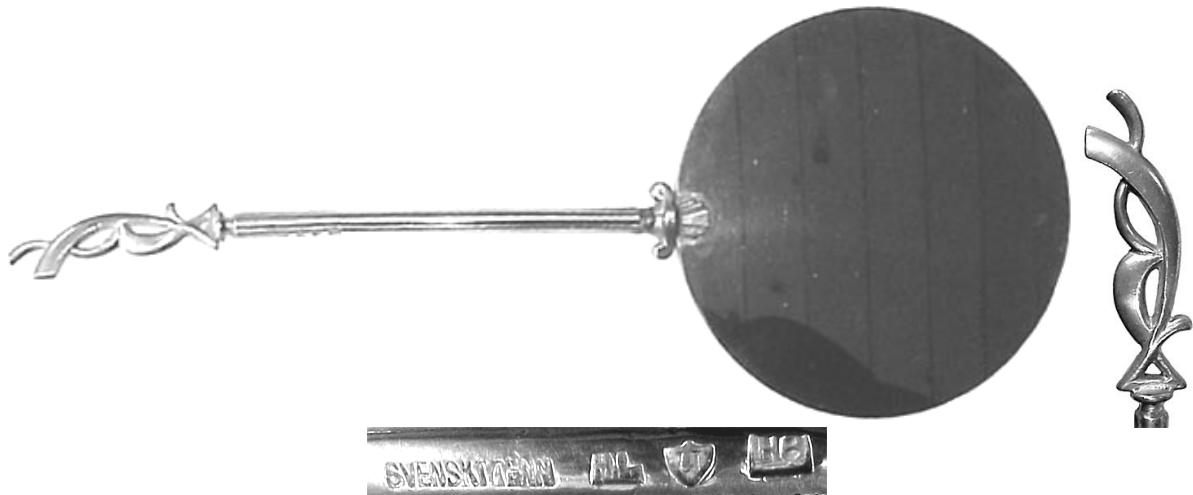


Swedish teapot with bakelite handle and finial and decoration in the Art Deco style. Marks underneath by the unidentified designer 'NJ' and date letter G8 for 1933. The town mark of St Erik indicates Stockholm manufacture.

Height o/a 170 mm, base diam 112 mm.



Toilet mirror with a swept handle decorated with a young girl's head. No marks, c. 1920-30



Mirror of polished pewter with stylized ornaments. Marks on handle by an unidentified pewterer 'HL' with date letter H8 for 1934

Fish serving dish with decoration of a pike and small fish in a current. Touch underneath by an unidentified firm.

Size 594 x 300 mm.



Beaker with decoration of stylized leaves. No marks, probably German.

Height 118 mm, rim diam 78 mm.





Group of three pipe stands. Marks underneath by Just Andersen, Copenhagen. The stand for two pipes was cast in Andersen's alloy called 'Disco' and etched brown to emulate bronze.



Group of three pipe stands. One English, the others probably Danish.



Large flower vase in the shape of a chalice with engine turned decoration. No marks, unknown origin, c. 1880.